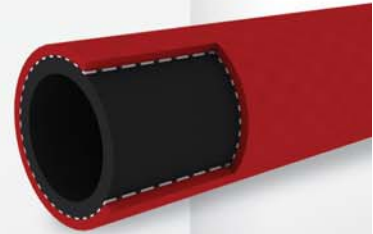


Extrude

Fire hose

FIRE REEL HOSE

- TUBE** : Synthetic rubber
- REINFORCEMENT** : High tensile, synthetic textile & filament yarn
- COVER** : Ozone & weather resistant synthetic rubber . Red: smooth
- TEMPERATURE** : -20° C ~ +80° C



ID		OD	WP	BP	L
inch	mm	mm	bar	bar	m
3/4	19.0	29.0	15	45	30
1	25.4	36.0	15	45	30

FABRIC FIRE HOSE LINED WITH RUBBER

- TUBE** : Synthetic rubber
- REINFORCEMENT** : High tensile, synthetic textile & filament yarn
- COVER** : Ozone & weather resistant synthetic rubber . Red: smooth
- TEMPERATURE** : -20° C ~ +80° C



ID		WP				BP				L
inch	mm	bar				bar				mt
3/4	20	8	10	13	16	24	30	39	48	2~35
1	25	8	10	13	16	24	30	39	48	
1 1/4	32	8	10	13	16	24	30	39	48	
1 1/2	40	8	10	13	16	24	30	39	48	
1 3/4	45	8	10	13	16	24	30	39	48	
2	50	8	10	13	16	24	30	39	48	
2 1/4	60	8	10	13	16	24	30	39	48	
2 1/2	65	8	10	13	16	24	30	39	48	
2 3/4	70	8	10	13	16	24	30	39	48	
3	76	8	10	13	16	24	30	39	48	
3 1/2	90	8	10	13	16	24	30	39	48	
4	100	8	10	13	16	24	30	39	48	