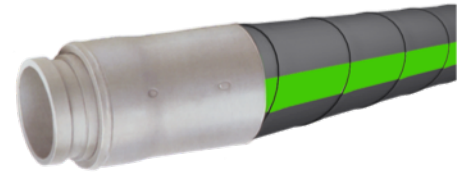


Concrete boom placing hose

Steel wire hose

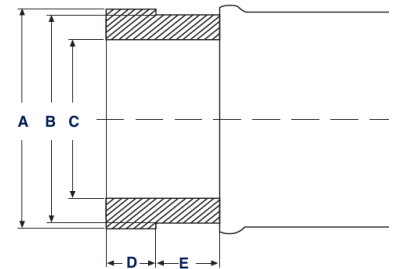
Tube: High Abrasion resistant conductive black rubber NBR.
Reinforcement: High tensile steel wire.
Cover: Weather, ozone resistance, abrasion resistant, black SBR/EPDM rubber.
Application: Used for concrete pumping.
Temperature: -30 C to +70 C (-22F to + 158 F)



4 wire hose

| ID size | mm/in OD | Bar/psi W.P. | Bar/psi B.P. | mm/in Radius | Lb/ft |
|-------------|------------|--------------|--------------|--------------|-------|
| 2" - 51mm | 70 / 2.75" | 85/ 1232 | 200/2900 | 275 | 2.22 |
| 2 ½" - 63.5 | 88 / 3.46" | 85/ 1232 | 200/2900 | 300 | 3.29 |
| 3" - 76mm | 102 / 4.0" | 85/ 1232 | 200/2900 | 350 | 4.00 |
| 4" - 102mm | 130 / 5.11 | 85/ 1232 | 200/2900 | 400 | 6.20 |
| 5" - 127mm | 155 / 6.10 | 85/ 1232 | 200/2900 | 500 | 7.50 |

| mm | 2 ½" | 3" | 4" | 4 ½" | 5" | 5 ½" |
|----|------|------|-----|-------|-----|------|
| A | 89 | 90 | 114 | 127.5 | 142 | 148 |
| B | 64.5 | 77 | 98 | 98 | 124 | 124 |
| C | 85 | 85 | 108 | 115 | 133 | 139 |
| D | 20 | 18 | 18 | 18 | 18 | 18 |
| E | 16 | 16.5 | 17 | 17 | 17 | 17 |



Flanges are made from ST52.0 DIN-1629 , inner part hardened 0.5mm for over 700 Hv to prevent corrosion.

6 Wire hose

| ID size | mm/in OD | Bar/psi W.P. | Bar/psi B.P. | mm/in Radius | Lb/ft |
|------------|------------|--------------|--------------|--------------|-------|
| 3" - 76mm | 107 / 4.0" | 120/ 1740 | 285/4132 | 350 | 4.60 |
| 4" - 102mm | 138 / 5.11 | 120/ 1740 | 285/4132 | 400 | 7.10 |
| 5" - 127mm | 165 / 6.10 | 120/ 1740 | 285/4132 | 500 | 8.50 |