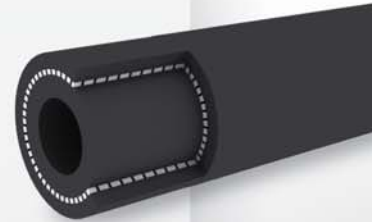


Extrude

Extrude hose

MULTI PURPOSE HOSE

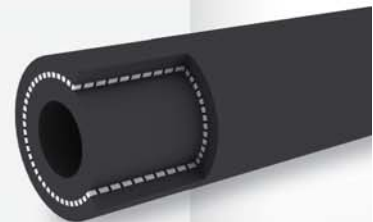
- APPLICATION** : For Oil, Fuel, Water, Air, Anti freeze & Grease
- TUBE** : Black Oil resistant synthetic rubber
- COVER** : Ozone / Smooth , weather resistant rubber
- REINFORCEMENT** : High tensile synthetic cords
- TEMPERATURE** : -20° C ~ +100° C



Internal Diameter ID		Outside Diameter OD	Working Pressure		Burst Pressure		Standard Length
inch	mm	mm	bar	psi	bar	psi	Mtrs
1/4	6.3	13.3	20	300	60	900	100
5/16	8	15.5	20	300	60	900	100
3/8	9.5	17.0	20	300	60	900	100
1/2	12.7	22.0	20	300	60	900	100
5/8	16.0	26.0	20	300	60	900	100
3/4	19.0	29.0	20	300	60	900	100
7/8	22.5	32.5	20	300	60	900	100
1	25.4	35.5	20	300	60	900	100
1 1/4	31.8	48.0	20	300	60	900	50
1 1/2	38.1	54.0	20	300	60	900	50

CAR HEATER HOSE

- TUBE** : Hot water resistant , smooth black EPDM
- REINFORCEMENT** : High tensile synthetic TEXTILE
- COVER** : Smooth , Black EPDM
- APPLICATIONS** : Used for handling hot water in automotive industries
- TEMPERATURE** : -30° C ~ +120° C (-22° F ~ +284° F)



ID		OD	WP		BP		L
inch	mm	mm	bar	psi	bar	psi	mt
1/4	6.3	12	5	75	15	225	100
5/16	8.0	14	5	75	15	225	100
3/8	9.5	16	5	75	15	225	100
1/2	12.7	20	5	75	15	225	100
5/8	16.0	23	5	75	15	225	50
3/4	19.0	27	5	75	15	225	50
1	25.4	34	5	75	15	225	50