

Mandrel built

Air hose

LIGHT DUTY AIR HOSE

- TUBE** : Air , water & oil mist resistant , smooth black SBR /NBR.
- REINFORCEMENT** : High tensile synthetic.
- COVER** : Abrasion, weather & ozone resistant smooth, black SBR /EPDM.
- APPLICATION** : Light duty compressed air services ; pneumatic machines & tools.
- TEMPERATURE** : -30° C ~ +85° C (22° F ~ 185° F)



ID		OD	WP		BP		L
inch	mm	mm	bar	psi	bar	psi	mt
1/2	12.7	23	10	150	30	600	60
5/8	16.0	26	10	150	30	600	60
3/4	19.0	29	10	150	30	600	60
1	25.4	37	10	150	30	600	60
1 1/4	31.8	46	10	150	30	600	60
1 1/2	38.1	52	10	150	30	600	60
2	51	65	10	150	30	600	60
2 1/2	63	78	10	150	30	600	60
3	76	92	10	150	30	600	60
3 1/2	90	106	10	150	30	600	40
4	102	118	10	150	30	600	40
5	127	147	10	150	30	600	40
6	152	172	10	150	30	600	40

MEDIUM DUTY AIR HOSE

- TUBE** : Air , water & oil mist resistant , smooth black SBR /NBR
- REINFORCEMENT** : High tensile synthetic
- COVER** : Abrasion, weather & ozone resistant smooth, black SBR /EPDM
- APPLICATION** : Use in construction & mining industries for pneumatic rock drills
- TEMPERATURE** : -30° C ~ +85° C (22° F ~ 185° F)



ID		OD	WP		BP		L
inch	mm	mm	bar	psi	bar	psi	mt
1/2	12.7	24	20	300	60	900	60
5/8	16.0	27	20	300	60	900	60
3/4	19.0	31	20	300	60	900	60
1	25.4	39	20	300	60	900	60
1 1/4	31.8	48	20	300	60	900	60
1 1/2	38.1	54	20	300	60	900	60
2	51	66	20	300	60	900	60
2 1/2	63	80	20	300	60	900	60
3	76	94	20	300	60	900	60
3 1/2	90	108	20	300	60	900	40
4	102	120	20	300	60	900	40
5	127	150	20	300	60	900	40
6	152	176	20	300	60	900	40

Mandrel built

Air hose

HEAVY DUTY AIR HOSE

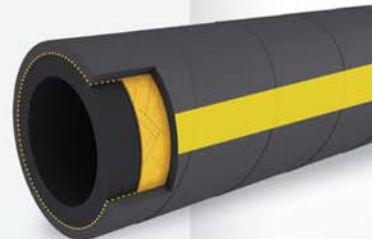
- TUBE** : Air , water & oil mist resistant , Black smooth SBR / NBR
- REINFORCEMENT** : High tensile synthetic cord
- COVER** : Abrasion, weather & ozone resistant smooth, black SBR / EPDM
- APPLICATION** : Use in heavy construction & mining industries
- TEMPERATURE** : -30° C ~ +85° C (22° F ~ 185° F)



ID		OD	WP		BP		L
inch	mm	mm	bar	psi	bar	psi	mt
1/2	12.7	26	25	375	75	1125	60
5/8	16.0	28	25	375	75	1125	60
3/4	19.0	33	25	375	75	1125	60
1	25.4	40	25	375	75	1125	60
1 1/4	31.8	48	25	375	75	1125	60
1 1/2	38.1	54	25	375	75	1125	60
2	51	68	25	375	75	1125	60
2 1/2	63	80	25	375	75	1125	60
3	76	94	25	375	75	1125	60
3 1/2	90	108	25	375	75	1125	40
4	102	120	25	375	75	1125	40
5	127	150	25	375	75	1125	40
6	152	176	25	375	75	1125	40

STEEL AIR HOSE

- TUBE** : Air , water & oil mist resistant , Smooth black SBR / NBR
- REINFORCEMENT** : High tensile steel wire
- COVER** : Abrasion, weather & ozone resistant smooth, black SBR / EPDM
- APPLICATION** : Use in heavy construction & mining industries .
- TEMPERATURE** : -30° C ~ +85° C (22° F ~ 185° F)



ID		OD	WP		BP		L
inch	mm	mm	bar	psi	bar	psi	mt
1/2	12.7	25	40	600	120	1800	60
5/8	16.0	28	40	600	120	1800	60
3/4	19.0	31	40	600	120	1800	60
1	25.4	38	40	600	120	1800	60
1 1/4	31.8	48	40	600	120	1800	60
1 1/2	38.1	54	40	600	120	1800	60
2	51	67	40	600	120	1800	60
2 1/2	63	80	40	600	120	1800	60
3	76	94	40	600	120	1800	60
3 1/2	90	108	40	600	120	1800	40
4	102	123	40	600	120	1800	40

Mandrel built

Air hose

COMPRESSED AIR HOSE



- TUBE** : Black SBR/NBR - oil mist resistant
- REINFORCEMENT** : High tensil steel cords
- COVER** : Yellow SBR , ozone resistant, abrasion resistant, pin pricked
- APPLICATION** : High pressure compressed air designed for heavy duty mine quarry applications where long service life and maximum safety is required



ID		OD	WP		BP		L
inch	mm	mm	bar	psi	bar	psi	mt
1/2	12.7	25	40	600	120	1800	30
3/4	19.0	31	40	600	120	1800	30
1	25.4	38	40	600	120	1800	30
1 1/4	31.8	48	40	600	120	1800	30
1 1/2	38.1	54	40	600	120	1800	30
2	51	67	40	600	120	1800	30
2 1/2	63	80	40	600	120	1800	30
3	76	94	40	600	120	1800	30
4	102	123	40	600	120	1800	30