

Extrude hose

Air Hose

Welding Hose

Twin Welding Hose

L.P.G. Hose

Twin L.P.G. Hose

Fuel and Oil Hose

Cotton Overbaided Fuel Hose

Fire Hose

Water Hose

Air Brake Hose

Jack Hammer Hose

Multipurpose Hose

Hydraulic Brake Hose

Sewer Cleaning Hose



 **PARAGON**
INDUSTRIE GmbH



Extrude hose

Extrude

Air hose

LIGHT DUTY AIR HOSE

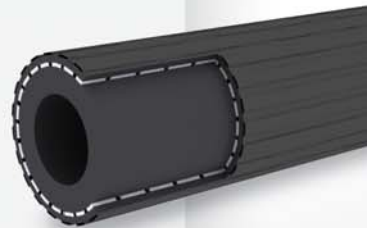
- TUBE** : Synthetic rubber
- REINFORCEMENT** : High tensile, synthetic textile & filament yarn
- COVER** : Ozone & weather resistant synthetic rubber, smooth, black I 4 lines
- APPLICATION** : For use with air compressor in mines, quarries , service stations, construction sites, shipyard, manufacturing industries & general services
- TEMPERATURE** : -20° C ~ +80° C



ID		OD	WP	BP	L
inch	mm	mm	bar	bar	m
1/4	6.3	12.5	10	30	100
5/16	8.0	15.5	10	30	100
3/8	9.5	16.5	10	30	100
1/2	12.7	20.0	10	30	100
5/8	16.0	24.0	10	30	100
3/4	19.0	28.0	10	30	100
1	25.4	36.0	10	30	100
1 1/4	31.8	46.0	10	30	50
1 1/2	38.1	52.0	10	30	50

MEDIUM DUTY AIR HOSE

- TUBE** : Synthetic rubber
- REINFORCEMENT** : High tensile, synthetic textile & filament yarn
- COVER** : Ozone & weather resistant synthetic rubber, smooth, black I 4 lines
- APPLICATION** : For use with air compressor in mines, quarries , service stations, construction sites, shipyard, manufacturing industries & general services
- TEMPERATURE** : -20° C ~ +80° C



ID		OD	WP	BP	L
inch	mm	mm	bar	bar	m
1/4	6.3	13.0	15	45	100
5/16	8.0	16.0	15	45	100
3/8	9.5	17.0	15	45	100
1/2	12.7	22.0	15	45	100
5/8	16.0	25.0	15	45	100
3/4	19.0	29.0	15	45	100
1	25.4	37.0	15	45	100
1 1/4	31.8	47.0	15	45	50
1 1/2	38.1	53.0	15	45	50

Extrude

Air hose

HEAVY DUTY AIR HOSE

- TUBE** : Synthetic rubber
- REINFORCEMENT** : High tensile, synthetic textile & filament yarn
- COVER** : Ozone & weather resistant synthetic rubber, smooth, black 14 lines
- APPLICATION** : For use with air compressor in mines, quarries , service stations, construction sites, shipyard, manufacturing industries & general services
- TEMPERATURE** : -20° C ~ +80° C



ID		OD	WP	BP	L
inch	mm	mm	bar	bar	m
1/4	6.3	14.5	20	60	100
5/16	8.0	16.5	20	60	100
3/8	9.5	18.5	20	60	100
1/2	12.7	24.0	20	60	100
5/8	16.0	28.0	20	60	100
3/4	19.0	30.0	20	60	100
1	25.4	39.0	20	60	100
1 1/4	31.8	48.0	20	60	50
1 1/2	38.1	54.0	20	60	50

JACK HAMMER HOSE

- TUBE** : Oil use with air compressors synthetic rubber
- REINFORCEMENT** : High tensile, synthetic textile & filament yarn
- COVER** : Ozone & weather resistant synthetic rubber , Smooth , Yellow
- APPLICATIONS** : for use with air compressors in construction work , Quarries & many civil engineering & industrial application
- TEMPERATURE** : -20° C ~ +80° C



ID		OD	WP	BP	L
inch	mm	mm	bar	bar	m
3/4	19.0	30.0	20	60	100
1	25.4	39.0	20	60	100

Extrude

Welding hose

ACTYLENE & OXYGEN HOSE

- TUBE** : High ignition temperature synthetic rubber
REINFORCEMENT : High tensile, synthetic textile & filament yarn
COVER : Excellent ozone & weather resistant synthetic rubber,
 14 Lines, smooth, Red : actylene Blue : oxygen
APPLICATION : For use with welding & allied process in workshop, shipyards,
 construction sites and manufacturing industries .
TEMPERATURE : -20° C ~ +80° C



ID		OD	WP	BP	L
inch	mm	mm	bar	bar	m
1/4	6.3	14.5	20	60	100
5/16	8.0	16.5	20	60	100
3/8	9.5	18.5	20	60	100

TWINE WELDING HOSE

- TUBE** : High ignition temperature synthetic rubber
REINFORCEMENT : High tensile, synthetic textile & filament yarn
COVER : Excellent ozone & weather resistant synthetic rubber,
 smooth, Red : actylene Blue : oxygen
APPLICATION : For use with welding & allied process in workshop, shipyards,
 construction sites and manufacturing industries .
TEMPERATURE : -20° C ~ +80° C



ID		OD	WP	BP	L
inch	mm	mm	bar	bar	m
3/16+3/16	5.0+5.0	12.0+12.0	20	60	100
1/4+1/4	6.3+6.3	13.3+13.3	20	60	100
1/4+5/16	6.3+8.0	13.3+15.0	20	60	100
1/4+3/8	6.3+9.5	13.3+16.0	20	60	100
5/16+5/16	8.0+8.0	15.0+15.0	20	60	100
5/16+3/8	8.0+9.5	15.0+16.0	20	60	100
3/8+3/8	9.5+9.5	16.0+16.0	20	60	100
3/8+3/8	10.0+10.0	17.0+17.0	20	60	100

Extrude

Welding hose

L.P.G HOSE

- TUBE** : High ignition temperature synthetic rubber
- REINFORCEMENT** : High tensile, synthetic textile & filament yarn
- COVER** : Excellent ozone & weather resistant synthetic rubber, smooth surface , Orange : LPG
- APPLICATION** : For use with welding & allied process in workshop, shipyards, construction sites and manufacturing industries .
- TEMPERATURE** : -20° C ~ +80° C



ID		OD	WP	BP	L
inch	mm	mm	bar	bar	m
3/16	5.0	12.0	20	60	100
1/4	6.3	13.3	20	60	100
5/16	8.0	15.0	20	60	100
3/8	9.5	17.0	20	60	100

TWINE L.P.G HOSE

- TUBE** : High ignition temperature synthetic rubber
- REINFORCEMENT** : High tensile, synthetic textile & filament yarn
- COVER** : Excellent ozone & weather resistant synthetic rubber, smooth surface , Orange : LPG Blue : oxygen
- APPLICATION** : For use with welding & allied process in workshop, shipyards, construction sites and manufacturing industries .
- TEMPERATURE** : -20° C ~ +80° C



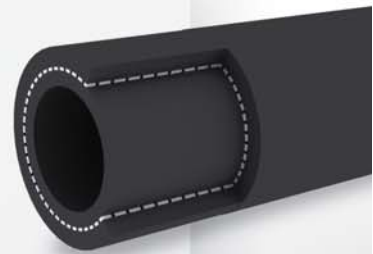
ID		OD	WP	BP	L
inch	mm	mm	bar	bar	m
3/16+3/16	5.0+5.0	12.0+12.0	20	60	100
1/4+1/4	6.3+6.3	13.3+13.3	20	60	100
5/16+5/16	8.0+8.0	15.0+15.0	20	60	100
3/8+3/8	9.5+9.5	17.0+17.0	20	60	100

Extrude

Fuel hose

SMOOTH FUEL HOSE

- TUBE** : Oil & Fuel resistant conductive black NBR
- REINFORCEMENT** : High tensile, synthetic textile
- COVER** : Oil , weather & ozone resistant , black CR/NBR/PVC
- APPLICATION** : For diesel, mineral Oil & grease
- TEMPERATURE** : -30° C ~ +85° C (-22°F ~ +185°F)



ID		OD	WP		BP		L
inch	mm	mm	bar	psi	bar	psi	mt
1/4	6.3	12	10	150	30	450	100
5/16	8.0	14	10	150	30	450	100
3/8	9.5	17	10	150	30	450	100
1/2	12.7	20	10	150	30	450	100
5/8	16.0	24	10	150	30	450	100
3/4	19.0	28	10	150	30	450	50
1	25.4	35	10	150	30	450	50

COTTON OVERBRAIDED FUEL HOSE

- TUBE** : Oil & Fuel resistant conductive black NBR
- REINFORCEMENT** : High tensile, synthetic textile
- COVER** : Oil , weather & ozone resistant , black CR/NBR/PVC
- APPLICATION** : For diesel, mineral Oil & grease
- TEMPERATURE** : -30° C ~ +85° C (-22°F ~ +185°F)



ID	OD	WP		BP		L
mm	mm	bar	psi	bar	psi	mt
3.2	7.0	10	150	30	450	100
3.5	7.5	10	150	30	450	100
4	8.0	10	150	30	450	100
5	10.0	10	150	30	450	100
5.5	10.5	10	150	30	450	100
6	11.0	10	150	30	450	100
7	12.0	10	150	30	450	100
7.5	12.5	10	150	30	450	100
8	15.0	10	150	30	450	100
10	17.0	10	150	30	450	100
12	18.0	10	150	30	450	100

Extrude

Fire hose

FIRE REEL HOSE

- TUBE** : Synthetic rubber
- REINFORCEMENT** : High tensile, synthetic textile & filament yarn
- COVER** : Ozone & weather resistant synthetic rubber . Red: smooth
- TEMPERATURE** : -20° C ~ +80° C



ID		OD	WP	BP	L
inch	mm	mm	bar	bar	m
3/4	19.0	29.0	15	45	30
1	25.4	36.0	15	45	30

FABRIC FIRE HOSE LINED WITH RUBBER

- TUBE** : Synthetic rubber
- REINFORCEMENT** : High tensile, synthetic textile & filament yarn
- COVER** : Ozone & weather resistant synthetic rubber . Red: smooth
- TEMPERATURE** : -20° C ~ +80° C



ID		WP				BP				L
inch	mm	bar				bar				mt
3/4	20	8	10	13	16	24	30	39	48	2~35
1	25	8	10	13	16	24	30	39	48	
1 1/4	32	8	10	13	16	24	30	39	48	
1 1/2	40	8	10	13	16	24	30	39	48	
1 3/4	45	8	10	13	16	24	30	39	48	
2	50	8	10	13	16	24	30	39	48	
2 1/4	60	8	10	13	16	24	30	39	48	
2 1/2	65	8	10	13	16	24	30	39	48	
2 3/4	70	8	10	13	16	24	30	39	48	
3	76	8	10	13	16	24	30	39	48	
3 1/2	90	8	10	13	16	24	30	39	48	
4	100	8	10	13	16	24	30	39	48	

Extrude

Water hose

LIGHT DUTY WATER HOSE

APPLICATIONS : For gardening & low pressure usage of conveying water.
Light weight & flexible

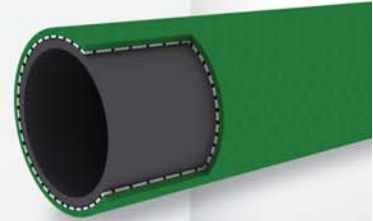
TUBE : Synthetic rubber

REINFORCEMENT : High tensile synthetic textile filament yarn

COVER : Ozone & weather resistant synthetic rubber .
Green:fluted , Black-orange : smooth

TEMPERATURE : -20° C ~ +80° C

SAFETY FACTOR : 4:1



ID		OD	WP	BP	L
inch	mm	mm	bar	bar	m
1/2	12.7	20.0	5	15	100
5/8	16.0	23.0	5	15	100
3/4	19.0	27.0	5	15	50
1	25.4	36.0	5	15	50

HEAVY DUTY WATER HOSE

APPLICATIONS : For gardening & low pressure usage of conveying water.
Light weight & flexible

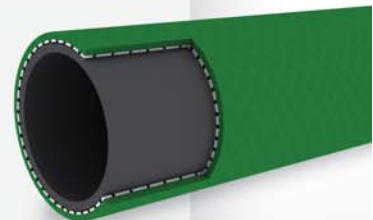
TUBE : Synthetic rubber

REINFORCEMENT : High tensile synthetic textile filament yarn

COVER : Ozone & weather resistant synthetic rubber,
Green:fluted , Black-orange : smooth

TEMPERATURE : -20° C ~ +80° C

SAFETY FACTOR : 4:1



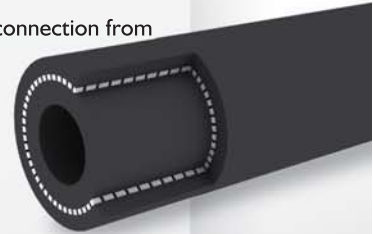
ID		OD	WP	BP	L
inch	mm	mm	bar	bar	m
1/2	12.7	22	10	30	100
5/8	16.0	25	10	30	100
3/4	19.0	29	10	30	100
1	25.4	38	10	30	50
1 1/4	31.8	47	10	30	50
1 1/2	38.1	53	10	30	50

Extrude

Brake hose

AIR BRAKE HOSE

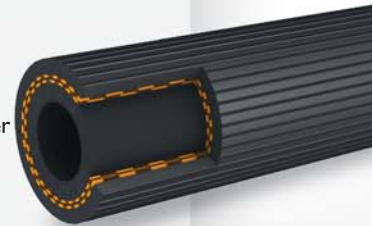
- APPLICATION** : Suitable fitting for use in automotive air brake system including flexible connection from flame to axle , tractor to trailer , trailer to trailer & other unshieded air lines that are exposed to potential pull or impact.
- TUBE** : NBR compound.
- REINFORCEMENT** : High tensile synthetic textile yarn / nylon (one or more braids).
- COVER** : NBR compound , Black or other color choiced , smooth.



ID	OD	WP		BP		L
		bar	psi	bar	psi	
3/16	11.5	15	225	45	675	100
1/4	14	15	225	45	675	100
5/16	16	15	225	45	675	100
3/8	18	15	225	45	675	100
1/2	22	15	225	45	675	100
5/8	25.5	15	225	45	675	100
3/4	30.5	15	225	45	675	100
1	36.5	15	225	45	675	100

HYDRAULIC BRAKE HOSE

- APPLICATION** : In automotive hydraulic brake systems .
- TUBE** : Hydraulic brake fluid resistant special synthetic
- REINFORCEMENT** : High tensile synthetic textile rubber .
- COVER** : Abrasion , ozone, ageing, oil & weather resistant special synthetic rubber



ID	OD	WP		BP		L
		bar	psi	bar	psi	
1/8	10.5	276	4002	490	7105	200
3/16	13	276	4002	490	7105	200

Extrude

Extrude hose

MULTI PURPOSE HOSE

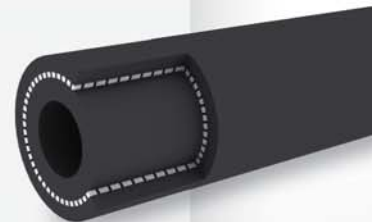
- APPLICATION** : For Oil, Fuel, Water, Air, Anti freeze & Grease
- TUBE** : Black Oil resistant synthetic rubber
- COVER** : Ozone / Smooth , weather resistant rubber
- REINFORCEMENT** : High tensile synthetic cords
- TEMPERATURE** : -20° C ~ +100° C



Internal Diameter ID		Outside Diameter OD	Working Pressure		Burst Pressure		Standard Length
inch	mm	mm	bar	psi	bar	psi	Mtrs
1/4	6.3	13.3	20	300	60	900	100
5/16	8	15.5	20	300	60	900	100
3/8	9.5	17.0	20	300	60	900	100
1/2	12.7	22.0	20	300	60	900	100
5/8	16.0	26.0	20	300	60	900	100
3/4	19.0	29.0	20	300	60	900	100
7/8	22.5	32.5	20	300	60	900	100
1	25.4	35.5	20	300	60	900	100
1 1/4	31.8	48.0	20	300	60	900	50
1 1/2	38.1	54.0	20	300	60	900	50

CAR HEATER HOSE

- TUBE** : Hot water resistant , smooth black EPDM
- REINFORCEMENT** : High tensile synthetic TEXTILE
- COVER** : Smooth , Black EPDM
- APPLICATIONS** : Used for handling hot water in automotive industries
- TEMPERATURE** : -30° C ~ +120° C (-22° F ~ +284° F)



ID		OD	WP		BP		L
inch	mm	mm	bar	psi	bar	psi	mt
1/4	6.3	12	5	75	15	225	100
5/16	8.0	14	5	75	15	225	100
3/8	9.5	16	5	75	15	225	100
1/2	12.7	20	5	75	15	225	100
5/8	16.0	23	5	75	15	225	50
3/4	19.0	27	5	75	15	225	50
1	25.4	34	5	75	15	225	50

Extrude

Sewer hose

SEWER CLEANING HOSE

- TUBE** : NBR , Black , Smooth
- REINFORCEMENT** : Textile , Woven
- COVER** : NR/BR , Black , smooth , highly abrasion resistant
- APPLICATIONS** : Used in sewer flush vehicle for cleaning drains in industry Business & infrastructure sectors .
- TEMPERATURE** : -35° C ~ +180° C
- SAFETY FACTOR** : 2.5:1



ID		OD	WP	BP	WT	L
inch	mm	mm	bar	bar	kg/m	mt
1/2	12.7	25.0	200	500	0.45	100~200
3/4	19.0	31.0	200	500	0.60	100~200
1	25.4	39.0	200	500	0.95	100~200
1 1/4	31.8	48.0	200	500	1.25	100~200