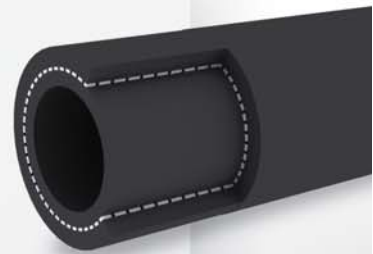


Extrude

Fuel hose

SMOOTH FUEL HOSE

- TUBE** : Oil & Fuel resistant conductive black NBR
- REINFORCEMENT** : High tensile, synthetic textile
- COVER** : Oil , weather & ozone resistant , black CR/NBR/PVC
- APPLICATION** : For diesel, mineral Oil & grease
- TEMPERATURE** : -30° C ~ +85° C (-22°F ~ +185°F)



ID		OD	WP		BP		L
inch	mm	mm	bar	psi	bar	psi	mt
1/4	6.3	12	10	150	30	450	100
5/16	8.0	14	10	150	30	450	100
3/8	9.5	17	10	150	30	450	100
1/2	12.7	20	10	150	30	450	100
5/8	16.0	24	10	150	30	450	100
3/4	19.0	28	10	150	30	450	50
1	25.4	35	10	150	30	450	50

COTTON OVERBRAIDED FUEL HOSE

- TUBE** : Oil & Fuel resistant conductive black NBR
- REINFORCEMENT** : High tensile, synthetic textile
- COVER** : Oil , weather & ozone resistant , black CR/NBR/PVC
- APPLICATION** : For diesel, mineral Oil & grease
- TEMPERATURE** : -30° C ~ +85° C (-22°F ~ +185°F)



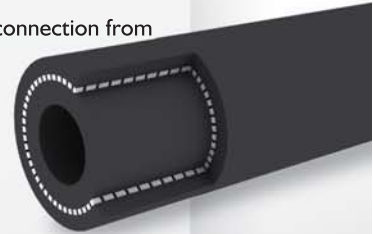
ID	OD	WP		BP		L
mm	mm	bar	psi	bar	psi	mt
3.2	7.0	10	150	30	450	100
3.5	7.5	10	150	30	450	100
4	8.0	10	150	30	450	100
5	10.0	10	150	30	450	100
5.5	10.5	10	150	30	450	100
6	11.0	10	150	30	450	100
7	12.0	10	150	30	450	100
7.5	12.5	10	150	30	450	100
8	15.0	10	150	30	450	100
10	17.0	10	150	30	450	100
12	18.0	10	150	30	450	100

Extrude

Brake hose

AIR BRAKE HOSE

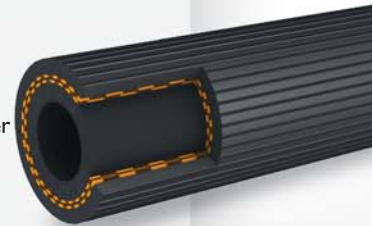
- APPLICATION** : Suitable fitting for use in automotive air brake system including flexible connection from flame to axle , tractor to trailer , trailer to trailer & other unshieded air lines that are exposed to potential pull or impact.
- TUBE** : NBR compound.
- REINFORCEMENT** : High tensile synthetic textile yarn / nylon (one or more braids).
- COVER** : NBR compound , Black or other color choiced , smooth.



ID	OD	WP		BP		L
		bar	psi	bar	psi	
3/16	11.5	15	225	45	675	100
1/4	14	15	225	45	675	100
5/16	16	15	225	45	675	100
3/8	18	15	225	45	675	100
1/2	22	15	225	45	675	100
5/8	25.5	15	225	45	675	100
3/4	30.5	15	225	45	675	100
1	36.5	15	225	45	675	100

HYDRAULIC BRAKE HOSE

- APPLICATION** : In automotive hydraulic brake systems .
- TUBE** : Hydraulic brake fluid resistant special synthetic
- REINFORCEMENT** : High tensile synthetic textile rubber .
- COVER** : Abrasion , ozone, ageing, oil & weather resistant special synthetic rubber



ID	OD	WP		BP		L
		bar	psi	bar	psi	
1/8	10.5	276	4002	490	7105	200
3/16	13	276	4002	490	7105	200